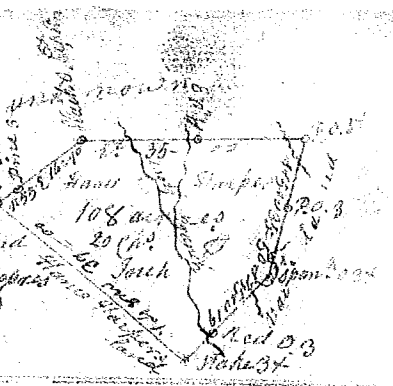
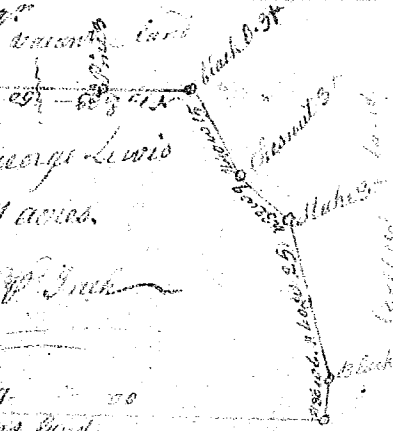


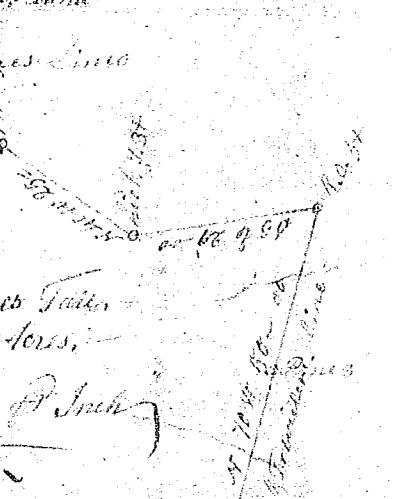
South Carolina Pursuant to a warrant from John Thomas Esq. Com<sup>r</sup> of the Court of Sessions N<sup>o</sup> Saluda dated 16<sup>th</sup> Juny 1794. I have admeasured and laid out unto France Harper a tract of one hundred and eight acres of land in Spartanburg County on Wolf Branch of Lawson's fork, (branch of Pacolet river, bounding by a line running N.W. the said Harper N.E. E. unknown S.W. by vacant land and both such shapes, bearings & bounding, as the above Plat represents  
 M<sup>o</sup> Wed<sup>y</sup> 21<sup>st</sup> Jan<sup>y</sup> 1794. J<sup>r</sup> Benson D.  
 Recorded 31<sup>st</sup> Jan<sup>y</sup> 1794. Del. del.



South Carolina Pursuant to a warrant from John Thomas Esq. Com<sup>r</sup> of the Court of Sessions N<sup>o</sup> Saluda dated 21<sup>st</sup> Juny 1793. I have admeasured and laid out unto George Lewis a tract of three hundred & eleven acres of land, on brush creek of Anoco, bounded by lines running N.W. by green land, N.E. by vacant land, N.E. & N.W. by cross run-ning by Adams land, and both such shapes form & marks as the above Plat represents  
 M<sup>o</sup> Wed<sup>y</sup> 23<sup>rd</sup> Juny 1793.  
 Recorded 1<sup>st</sup> Feb<sup>r</sup>y 1794. Joseph Benson D.



South Carolina Pursuant to a warrant from John Thomas Esq. Com<sup>r</sup> of the Court of Sessions N<sup>o</sup> Saluda dated 10<sup>th</sup> Dec<sup>r</sup> 1793. I have admeasured and laid out unto James Tate a tract of four hundred & eighty acres of land, in Pinckney District on the branches of Pinckney Creek S<sup>o</sup> side broad river, both such shapes, form & marks, bearings and bounding, as the above Plat represents.  
 M<sup>o</sup> Wed<sup>y</sup> 10<sup>th</sup> Dec<sup>r</sup> 1793.  
 Charles Sims D.  
 Recorded 3<sup>rd</sup> Feb<sup>r</sup>y 1794.



South Carolina Pursuant to a warrant from John Thomas Esq. Com<sup>r</sup> of the Court of Sessions N<sup>o</sup> Saluda dated 10<sup>th</sup> Jan<sup>y</sup> 1794. I have admeasured and laid out unto John Undermann a tract of one hundred & twenty six acres of land in Greenville County on a branch of reedy river bounded by a line running N.W. 20. & N.E. 50. originally granted to Anne Salack by lines S.W. 50. S.E. 30. by Cofferly, and N.E. of John Undermann's land, and both such shapes, form & marks as the above Plat represents,  
 M<sup>o</sup> Wed<sup>y</sup> 13<sup>th</sup> Jan<sup>y</sup> 1794  
 Sent to W<sup>m</sup> Pope  
 James Hamner D.  
 Recorded 19<sup>th</sup> Feb<sup>r</sup>y 1794.

